

ChromoTrax

DNA FISH PROBES

US Catalog - 2006-2007

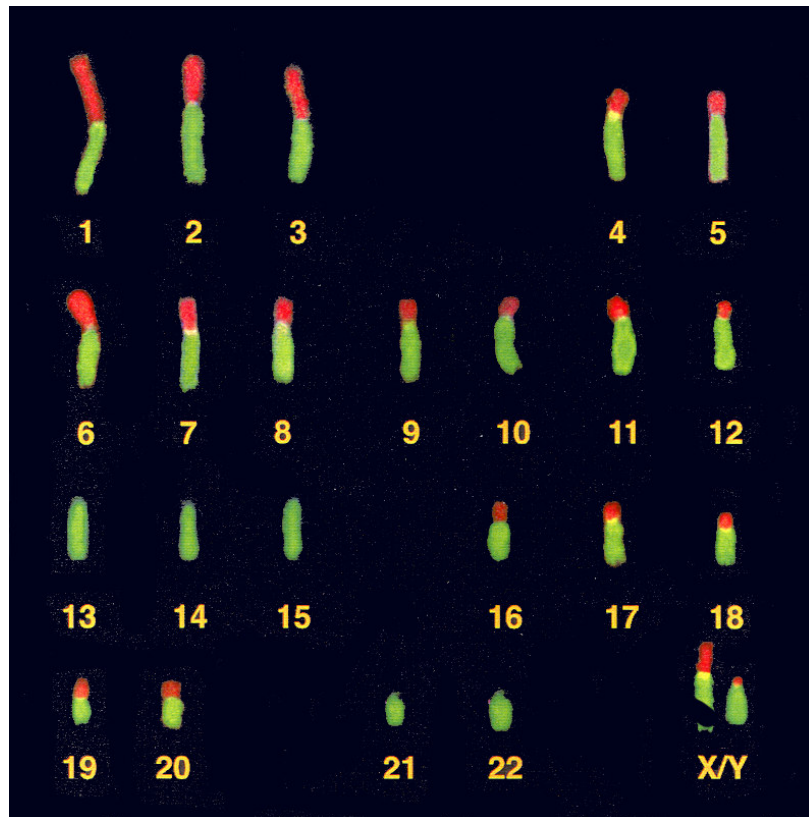
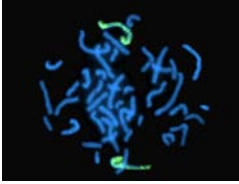


Table of Contents

Whole Chromosome Probes	Page 3
Arm Probes	Page 5
Terminal Band Probes	Page 11
Specific Band Probes	Page 16
Oncogene Probes	Page 17
Protocol	Page 18

Whole Chromosome Probes



Whole Chromosome Probe 1

Whole Chromosome DNA Probe 1 yields a uniform signal across both arms of chromosome 1. It shows no hybridization to any other human chromosomes.

TEN ASSAYS IN HYBRIDIZATION BUFFER

W101-GRN	DIRECT LABEL FLUORESCEIN
W101-ORG	DIRECT LABEL RHODAMINE
W101-RED	DIRECT LABEL TEXAS RED

Whole Chromosome Probe 5

Whole Chromosome DNA Probe 5 yields a uniform signal across both arms of chromosome 5. It shows no hybridization to any other human chromosomes.

TEN ASSAYS IN HYBRIDIZATION BUFFER

W501-GRN	DIRECT LABEL FLUORESCEIN
W501-ORG	DIRECT LABEL RHODAMINE
W501-RED	DIRECT LABEL TEXAS RED

Whole Chromosome Probe 2

Whole Chromosome DNA Probe 2 yields a uniform signal across both arms of chromosome 2. It shows no hybridization to any other human chromosomes.

TEN ASSAYS IN HYBRIDIZATION BUFFER

W201-GRN	DIRECT LABEL FLUORESCEIN
W201-ORG	DIRECT LABEL RHODAMINE
W201-RED	DIRECT LABEL TEXAS RED

Whole Chromosome Probe 6

Whole Chromosome DNA Probe 6 yields a uniform signal across both arms of chromosome 6. It shows no hybridization to any other human chromosomes.

TEN ASSAYS IN HYBRIDIZATION BUFFER

W601-GRN	DIRECT LABEL FLUORESCEIN
W601-ORG	DIRECT LABEL RHODAMINE
W601-RED	DIRECT LABEL TEXAS RED

Whole Chromosome Probe 3

Whole Chromosome DNA Probe 3 yields a uniform signal across both arms of chromosome 3. It shows no hybridization to any other human chromosomes.

TEN ASSAYS IN HYBRIDIZATION BUFFER

W301-GRN	DIRECT LABEL FLUORESCEIN
W301-ORG	DIRECT LABEL RHODAMINE
W301-RED	DIRECT LABEL TEXAS RED

Whole Chromosome Probe 7

Whole Chromosome DNA Probe 7 yields a uniform signal across both arms of chromosome 7. It shows no hybridization to any other human chromosomes.

TEN ASSAYS IN HYBRIDIZATION BUFFER

W701-GRN	DIRECT LABEL FLUORESCEIN
W701-ORG	DIRECT LABEL RHODAMINE
W701-RED	DIRECT LABEL TEXAS RED

Whole Chromosome Probe 4

Whole Chromosome DNA Probe 4 yields a uniform signal across both arms of chromosome 4. It shows no hybridization to any other human chromosomes.

TEN ASSAYS IN HYBRIDIZATION BUFFER

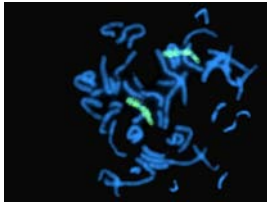
W401-GRN	DIRECT LABEL FLUORESCEIN
W401-ORG	DIRECT LABEL RHODAMINE
W401-RED	DIRECT LABEL TEXAS RED

Whole Chromosome Probe 8

Whole Chromosome DNA Probe 8 yields a uniform signal across both arms of chromosome 8. It shows no hybridization to any other human chromosomes.

TEN ASSAYS IN HYBRIDIZATION BUFFER

W501-GRN	DIRECT LABEL FLUORESCEIN
W501-ORG	DIRECT LABEL RHODAMINE
W501-RED	DIRECT LABEL TEXAS RED



Whole Chromosome Probe 9

Whole Chromosome DNA Probe 9 yields a uniform signal across both arms of chromosome 9. It shows no hybridization to any other human chromosomes.

TEN ASSAYS IN HYBRIDIZATION BUFFER

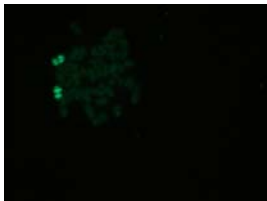
W901-GRN	DIRECT LABEL FLUORESC EIN
W901-ORG	DIRECT LABEL RHODAMINE
W901-RED	DIRECT LABEL TEXAS RED

Whole Chromosome Probe 16

Whole Chromosome DNA Probe 16 yields a uniform signal across both arms of chromosome 16. It shows no hybridization to any other human chromosomes.

TEN ASSAYS IN HYBRIDIZATION BUFFER

W1601-GRN	DIRECT LABEL FLUORESC EIN
W1601-ORG	DIRECT LABEL RHODAMINE
W1601-RED	DIRECT LABEL TEXAS RED



Whole Chromosome Probe 10

Whole Chromosome DNA Probe 10 yields a uniform signal across both arms of chromosome 10. It shows no hybridization to any other human chromosomes.

TEN ASSAYS IN HYBRIDIZATION BUFFER

W1001-GRN	DIRECT LABEL FLUORESC EIN
W1001ORG	DIRECT LABEL RHODAMINE
W1001-RED	DIRECT LABEL TEXAS RED

Whole Chromosome Probe 17

Whole Chromosome DNA Probe 17 yields a uniform signal across both arms of chromosome 17. It shows no hybridization to any other human chromosomes.

TEN ASSAYS IN HYBRIDIZATION BUFFER

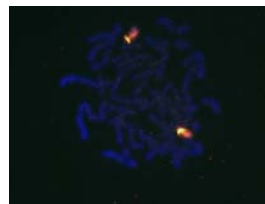
W1701-GRN	DIRECT LABEL FLUORESC EIN
W1701-ORG	DIRECT LABEL RHODAMINE
W1701-RED	DIRECT LABEL TEXAS RED

Whole Chromosome Probe 11

Whole Chromosome DNA Probe 11 yields a uniform signal across both arms of chromosome 11. It shows no hybridization to any other human chromosomes.

TEN ASSAYS IN HYBRIDIZATION BUFFER

W201-GRN	DIRECT LABEL FLUORESC EIN
W201-ORG	DIRECT LABEL RHODAMINE
W201-RED	DIRECT LABEL TEXAS RED



Whole Chromosome Probe 18

Whole Chromosome DNA Probe 18 yields a uniform signal across both arms of chromosome 18. It shows no hybridization to any other human chromosomes.

TEN ASSAYS IN HYBRIDIZATION BUFFER

W1801-GRN	DIRECT LABEL FLUORESC EIN
W1801-ORG	DIRECT LABEL RHODAMINE
W1801-RED	DIRECT LABEL TEXAS RED

Whole Chromosome Probe 12

Whole Chromosome DNA Probe 12 yields a uniform signal across both arms of chromosome 12. It shows no hybridization to any other human chromosomes.

TEN ASSAYS IN HYBRIDIZATION BUFFER

W1201-GRN	DIRECT LABEL FLUORESC EIN
W1201-ORG	DIRECT LABEL RHODAMINE
W1201-RED	DIRECT LABEL TEXAS RED

Whole Chromosome Probe 19

Whole Chromosome DNA Probe 19 yields a uniform signal across both arms of chromosome 19. It shows no hybridization to any other human chromosomes.

TEN ASSAYS IN HYBRIDIZATION BUFFER

W1901-GRN	DIRECT LABEL FLUORESC EIN
W1901-ORG	DIRECT LABEL RHODAMINE
W1901-RED	DIRECT LABEL TEXAS RED

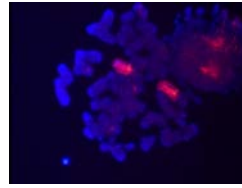
Arm Probes

Whole Chromosome Probe 20

Whole Chromosome DNA Probe 20 yields a uniform signal across both arms of chromosome 20. It shows no hybridization to any other human chromosomes.

TEN ASSAYS IN HYBRIDIZATION BUFFER

W2001-GRN	DIRECT LABEL FLUORESCCEIN
W2001-ORG	DIRECT LABEL RHODAMINE
W2001-RED	DIRECT LABEL TEXAS RED

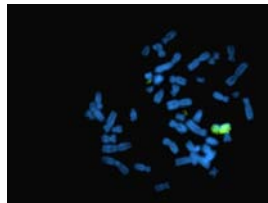


Arm Probe 1p

1p DNA probe gives a bright specific signal which evenly covers the entire length of the p arm of chromosome 1, and shows no cross-hybridization to other chromosomes or to the q arm.

TEN ASSAYS IN HYBRIDIZATION BUFFER

A101-GRN	DIRECT LABEL FLUORESCCEIN
A101-ORG	DIRECT LABEL RHODAMINE
A101-RED	DIRECT LABEL TEXAS RED

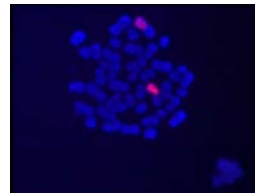


Whole Chromosome Probe X

Whole Chromosome DNA Probe X yields a uniform signal across both arms of chromosome X. It shows no hybridization to any other human chromosomes.

TEN ASSAYS IN HYBRIDIZATION BUFFER

W2301-GRN	DIRECT LABEL FLUORESCCEIN
W2301-ORG	DIRECT LABEL RHODAMINE
W2301-RED	DIRECT LABEL TEXAS RED(30µL)

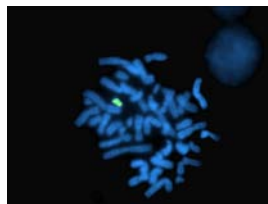


Arm Probe 1q

1q DNA probe gives a bright specific signal which evenly covers the entire length of the q arm of chromosome 1, and shows no cross-hybridization to other chromosomes or to the p arm.

TEN ASSAYS IN HYBRIDIZATION BUFFER

A102-GRN	DIRECT LABEL FLUORESCCEIN
A102-ORG	DIRECT LABEL RHODAMINE
A102-RED	DIRECT LABEL TEXAS RED



Whole Chromosome Probe Y

Whole Chromosome DNA Probe Y yields a uniform signal across both arms of chromosome Y. It shows no hybridization to any other human chromosomes.

TEN ASSAYS IN HYBRIDIZATION BUFFER

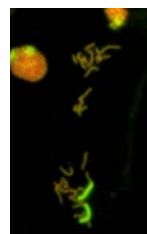
W2401-GRN	DIRECT LABEL FLUORESCCEIN
W2401-ORG	DIRECT LABEL RHODAMINE
W2401-RED	DIRECT LABEL TEXAS RED(30µL)

Arm Probe 2p

2p DNA probe gives a bright specific signal which evenly covers the entire length of the p arm of chromosome 2, and shows no cross-hybridization to other chromosomes or to the q arm.

TEN ASSAYS IN HYBRIDIZATION BUFFER

A201-GRN	DIRECT LABEL FLUORESCCEIN
A201-ORG	DIRECT LABEL RHODAMINE
A201-RED	DIRECT LABEL TEXAS RED



Arm Probe 2q

2q DNA probe gives a bright specific signal which evenly covers the entire length of the q arm of chromosome 2, and shows no cross-hybridization to other chromosomes or to the p arm.

TEN ASSAYS IN HYBRIDIZATION BUFFER

A202-GRN	DIRECT LABEL FLUORESCCEIN
A202-ORG	DIRECT LABEL RHODAMINE
A202-RED	DIRECT LABEL TEXAS RED

Arm Probe 3p

3p DNA probe gives a bright specific signal which evenly covers the entire length of the p arm of chromosome 3, and shows no cross-hybridization to other chromosomes or to the q arm.

TEN ASSAYS IN HYBRIDIZATION BUFFER

A301-GRN	DIRECT LABEL FLUORESCCEIN
A301-ORG	DIRECT LABEL RHODAMINE
A301-RED	DIRECT LABEL TEXAS RED

Arm Probe 5p

5p DNA probe gives a bright specific signal which evenly covers the entire length of the p arm of chromosome 5, and shows no cross-hybridization to other chromosomes or to the q arm.

TEN ASSAYS IN HYBRIDIZATION BUFFER

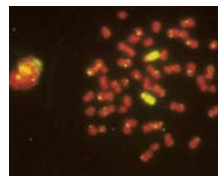
A501-GRN	DIRECT LABEL FLUORESCCEIN
A501-ORG	DIRECT LABEL RHODAMINE
A501-RED	DIRECT LABEL TEXAS RED

Arm Probe 3q

3q DNA probe gives a bright specific signal which evenly covers the entire length of the q arm of chromosome 3, and shows no cross-hybridization to other chromosomes or to the p arm.

TEN ASSAYS IN HYBRIDIZATION BUFFER

A302-GRN	DIRECT LABEL FLUORESCCEIN
A302-ORG	DIRECT LABEL RHODAMINE
A302-RED	DIRECT LABEL TEXAS RED

**Arm Probe 5q**

5q DNA probe gives a bright specific signal which evenly covers the entire length of the q arm of chromosome 5, and shows no cross-hybridization to other chromosomes or to the p arm.

TEN ASSAYS IN HYBRIDIZATION BUFFER

A502-GRN	DIRECT LABEL FLUORESCCEIN
A502-ORG	DIRECT LABEL RHODAMINE
A502-RED	DIRECT LABEL TEXAS RED

Arm Probe 4p

4p DNA probe gives a bright specific signal which evenly covers the entire length of the p arm of chromosome 4, and shows no cross-hybridization to other chromosomes or to the q arm.

TEN ASSAYS IN HYBRIDIZATION BUFFER

A401-GRN	DIRECT LABEL FLUORESCCEIN
A401-ORG	DIRECT LABEL RHODAMINE
A401-RED	DIRECT LABEL TEXAS RED

Arm Probe 6p

6p DNA probe gives a bright specific signal which evenly covers the entire length of the p arm of chromosome 6, and shows no cross-hybridization to other chromosomes or to the q arm.

TEN ASSAYS IN HYBRIDIZATION BUFFER

A601-GRN	DIRECT LABEL FLUORESCCEIN
A601-ORG	DIRECT LABEL RHODAMINE
A601-RED	DIRECT LABEL TEXAS RED

Arm Probe 4q

3q DNA probe gives a bright specific signal which evenly covers the entire length of the q arm of chromosome 3, and shows no cross-hybridization to other chromosomes or to the p arm.

TEN ASSAYS IN HYBRIDIZATION BUFFER

A402-GRN	DIRECT LABEL FLUORESCCEIN
A402-ORG	DIRECT LABEL RHODAMINE
A402-RED	DIRECT LABEL TEXAS RED

Arm Probe 6q

6q DNA probe gives a bright specific signal which evenly covers the entire length of the q arm of chromosome 6, and shows no cross-hybridization to other chromosomes or to the p arm.

TEN ASSAYS IN HYBRIDIZATION BUFFER

A602-GRN	DIRECT LABEL FLUORESCCEIN
A602-ORG	DIRECT LABEL RHODAMINE
A602-RED	DIRECT LABEL TEXAS RED

Arm Probe 7p

7p DNA probe gives a bright specific signal which evenly covers the entire length of the p arm of chromosome 7, and shows no cross-hybridization to other chromosomes or to the q arm.

TEN ASSAYS IN HYBRIDIZATION BUFFER

A701-GRN	DIRECT LABEL FLUORESCCEIN
A701-ORG	DIRECT LABEL RHODAMINE
A701-RED	DIRECT LABEL TEXAS RED

Arm Probe 9p

9p DNA probe gives a bright specific signal which evenly covers the entire length of the p arm of chromosome 9, and shows no cross-hybridization to other chromosomes or to the q arm.

TEN ASSAYS IN HYBRIDIZATION BUFFER

A901-GRN	DIRECT LABEL FLUORESCCEIN
A901-ORG	DIRECT LABEL RHODAMINE
A901-RED	DIRECT LABEL TEXAS RED

Arm Probe 7q

7q DNA probe gives a bright specific signal which evenly covers the entire length of the q arm of chromosome 7, and shows no cross-hybridization to other chromosomes or to the p arm.

TEN ASSAYS IN HYBRIDIZATION BUFFER

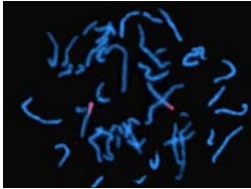
A702-GRN	DIRECT LABEL FLUORESCCEIN
A702-ORG	DIRECT LABEL RHODAMINE
A702-RED	DIRECT LABEL TEXAS RED

Arm Probe 9q

9q DNA probe gives a bright specific signal which evenly covers the entire length of the q arm of chromosome 9, and shows no cross-hybridization to other chromosomes or to the p arm.

TEN ASSAYS IN HYBRIDIZATION BUFFER

A902-GRN	DIRECT LABEL FLUORESCCEIN
A902-ORG	DIRECT LABEL RHODAMINE
A902-RED	DIRECT LABEL TEXAS RED

**Arm Probe 8p**

8p DNA probe gives a bright specific signal which evenly covers the entire length of the p arm of chromosome 8, and shows no cross-hybridization to other chromosomes or to the q arm.

TEN ASSAYS IN HYBRIDIZATION BUFFER

A801-GRN	DIRECT LABEL FLUORESCCEIN
A801-ORG	DIRECT LABEL RHODAMINE
A801-RED	DIRECT LABEL TEXAS RED

Arm Probe 10p

10p DNA probe gives a bright specific signal which evenly covers the entire length of the p arm of chromosome 10, and shows no cross-hybridization to other chromosomes or to the q arm.

TEN ASSAYS IN HYBRIDIZATION BUFFER

A1001-GRN	DIRECT LABEL FLUORESCCEIN
A1001-ORG	DIRECT LABEL RHODAMINE
A1001-RED	DIRECT LABEL TEXAS RED

Arm Probe 8q

8q DNA probe gives a bright specific signal which evenly covers the entire length of the q arm of chromosome 8, and shows no cross-hybridization to other chromosomes or to the p arm.

TEN ASSAYS IN HYBRIDIZATION BUFFER

A802-GRN	DIRECT LABEL FLUORESCCEIN
A802-ORG	DIRECT LABEL RHODAMINE
A802-RED	DIRECT LABEL TEXAS RED

Arm Probe 10q

10q DNA probe gives a bright specific signal which evenly covers the entire length of the q arm of chromosome 10, and shows no cross-hybridization to other chromosomes or to the p arm.

TEN ASSAYS IN HYBRIDIZATION BUFFER

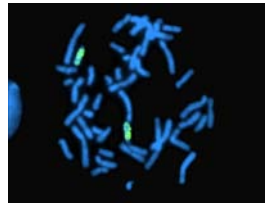
A1002-GRN	DIRECT LABEL FLUORESCCEIN
A1002-ORG	DIRECT LABEL RHODAMINE
A1002-RED	DIRECT LABEL TEXAS RED

Arm Probe 11p

11p DNA probe gives a bright specific signal which evenly covers the entire length of the p arm of chromosome 11, and shows no cross-hybridization to other chromosomes or to the q arm.

TEN ASSAYS IN HYBRIDIZATION BUFFER

A1101-GRN	DIRECT LABEL FLUORESCCEIN
A1101-ORG	DIRECT LABEL RHODAMINE
A1101-RED	DIRECT LABEL TEXAS RED

**Arm Probe 13q**

13q DNA probe gives a bright specific signal which evenly covers the entire length of the q arm of chromosome 1q, and shows no cross-hybridization to other chromosomes.

TEN ASSAYS IN HYBRIDIZATION BUFFER

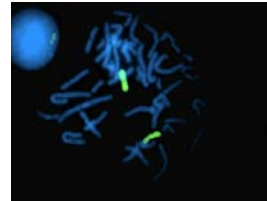
A1302-GRN	DIRECT LABEL FLUORESCCEIN
A1302-ORG	DIRECT LABEL RHODAMINE
A1302-RED	DIRECT LABEL TEXAS RED

Arm Probe 11q

11q DNA probe gives a bright specific signal which evenly covers the entire length of the q arm of chromosome 11, and shows no cross-hybridization to other chromosomes or to the p arm.

TEN ASSAYS IN HYBRIDIZATION BUFFER

A1102-GRN	DIRECT LABEL FLUORESCCEIN
A1102-ORG	DIRECT LABEL RHODAMINE
A1102-RED	DIRECT LABEL TEXAS RED

**Arm Probe 14q**

14q DNA probe gives a bright specific signal which evenly covers the entire length of the q arm of chromosome 14q, and shows no cross-hybridization to other chromosomes.

TEN ASSAYS IN HYBRIDIZATION BUFFER

A1402-GRN	DIRECT LABEL FLUORESCCEIN
A1402-ORG	DIRECT LABEL RHODAMINE
A1402-RED	DIRECT LABEL TEXAS RED

Arm Probe 12p

12p DNA probe gives a bright specific signal which evenly covers the entire length of the p arm of chromosome 12, and shows no cross-hybridization to other chromosomes or to the q arm.

TEN ASSAYS IN HYBRIDIZATION BUFFER

A1201-GRN	DIRECT LABEL FLUORESCCEIN
A1201-ORG	DIRECT LABEL RHODAMINE
A1201-RED	DIRECT LABEL TEXAS RED

Arm Probe 15q

15q DNA probe gives a bright specific signal which evenly covers the entire length of the q arm of chromosome 15q, and shows no cross-hybridization to other chromosomes.

TEN ASSAYS IN HYBRIDIZATION BUFFER

A1502-GRN	DIRECT LABEL FLUORESCCEIN
A1502-ORG	DIRECT LABEL RHODAMINE
A1502-RED	DIRECT LABEL TEXAS RED

Arm Probe 12q

12q DNA probe gives a bright specific signal which evenly covers the entire length of the q arm of chromosome 12, and shows no cross-hybridization to other chromosomes or to the p arm.

TEN ASSAYS IN HYBRIDIZATION BUFFER

A1202-GRN	DIRECT LABEL FLUORESCCEIN
A1202-ORG	DIRECT LABEL RHODAMINE
A1202-RED	DIRECT LABEL TEXAS RED

Arm Probe 16p

16p DNA probe gives a bright specific signal which evenly covers the entire length of the p arm of chromosome 16, and shows no cross-hybridization to other chromosomes or to the q arm.

TEN ASSAYS IN HYBRIDIZATION BUFFER

A1601-GRN	DIRECT LABEL FLUORESCCEIN
A1601-ORG	DIRECT LABEL RHODAMINE
A1601-RED	DIRECT LABEL TEXAS RED

Arm Probe 16q

16q DNA probe gives a bright specific signal which evenly covers the entire length of the q arm of chromosome 16, and shows no cross-hybridization to other chromosomes or to the p arm.

TEN ASSAYS IN HYBRIDIZATION BUFFER

A1602-GRN	DIRECT LABEL FLUORESCCEIN
A1602-ORG	DIRECT LABEL RHODAMINE
A1602-RED	DIRECT LABEL TEXAS RED

Arm Probe 18q

18q DNA probe gives a bright specific signal which evenly covers the entire length of the q arm of chromosome 18, and shows no cross-hybridization to other chromosomes or to the p arm.

TEN ASSAYS IN HYBRIDIZATION BUFFER

A1802-GRN	DIRECT LABEL FLUORESCCEIN
A1802-ORG	DIRECT LABEL RHODAMINE
A1802-RED	DIRECT LABEL TEXAS RED

Arm Probe 17p

17p DNA probe gives a bright specific signal which evenly covers the entire length of the p arm of chromosome 17, and shows no cross-hybridization to other chromosomes or to the q arm.

TEN ASSAYS IN HYBRIDIZATION BUFFER

A1701-GRN	DIRECT LABEL FLUORESCCEIN
A1701-ORG	DIRECT LABEL RHODAMINE
A1701-RED	DIRECT LABEL TEXAS RED

Arm Probe 19p

19p DNA probe gives a bright specific signal which evenly covers the entire length of the p arm of chromosome 19, and shows no cross-hybridization to other chromosomes or to the q arm.

TEN ASSAYS IN HYBRIDIZATION BUFFER

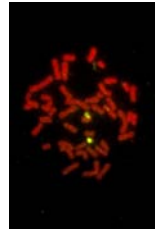
A1901-GRN	DIRECT LABEL FLUORESCCEIN
A1901-ORG	DIRECT LABEL RHODAMINE
A1901-RED	DIRECT LABEL TEXAS RED

Arm Probe 17q

17q DNA probe gives a bright specific signal which evenly covers the entire length of the q arm of chromosome 17, and shows no cross-hybridization to other chromosomes or to the p arm.

TEN ASSAYS IN HYBRIDIZATION BUFFER

A1702-GRN	DIRECT LABEL FLUORESCCEIN
A1702-ORG	DIRECT LABEL RHODAMINE
A1702-RED	DIRECT LABEL TEXAS RED

**Arm Probe 19q**

19q DNA probe gives a bright specific signal which evenly covers the entire length of the q arm of chromosome 19, and shows no cross-hybridization to other chromosomes or to the p arm.

TEN ASSAYS IN HYBRIDIZATION BUFFER

A1902-GRN	DIRECT LABEL FLUORESCCEIN
A1902-ORG	DIRECT LABEL RHODAMINE
A1902-RED	DIRECT LABEL TEXAS RED

Arm Probe 18p

18p DNA probe gives a bright specific signal which evenly covers the entire length of the p arm of chromosome 18, and shows no cross-hybridization to other chromosomes or to the q arm.

TEN ASSAYS IN HYBRIDIZATION BUFFER

A1801-GRN	DIRECT LABEL FLUORESCCEIN
A1801-ORG	DIRECT LABEL RHODAMINE
A1801-RED	DIRECT LABEL TEXAS RED

Arm Probe 20p

20p DNA probe gives a bright specific signal which evenly covers the entire length of the p arm of chromosome 20, and shows no cross-hybridization to other chromosomes or to the q arm.

TEN ASSAYS IN HYBRIDIZATION BUFFER

A2001-GRN	DIRECT LABEL FLUORESCCEIN
A2001-ORG	DIRECT LABEL RHODAMINE
A2001-RED	DIRECT LABEL TEXAS RED

Arm Probe 20q

20q DNA probe gives a bright specific signal which evenly covers the entire length of the p arm of chromosome 20q, and shows no cross-hybridization to other chromosomes or to the q arm.

TEN ASSAYS IN HYBRIDIZATION BUFFER

A2002-GRN	DIRECT LABEL FLUORESCCEIN
A2002-ORG	DIRECT LABEL RHODAMINE
A2002-RED	DIRECT LABEL TEXAS RED

Arm Probe Xq

Xq DNA probe gives a bright specific signal which evenly covers the entire length of the q arm of chromosome X, and shows no cross-hybridization to other chromosomes or to the p arm.

TEN ASSAYS IN HYBRIDIZATION BUFFER

A2302-GRN	DIRECT LABEL FLUORESCCEIN
A2302-ORG	DIRECT LABEL RHODAMINE
A2302-RED	DIRECT LABEL TEXAS RED

Arm Probe 21q

21q DNA probe gives a bright specific signal which evenly covers the entire length of the q arm of chromosome 21, and shows no cross-hybridization to other chromosomes or to the p arm.

TEN ASSAYS IN HYBRIDIZATION BUFFER

A2102-GRN	DIRECT LABEL FLUORESCCEIN
A2102-ORG	DIRECT LABEL RHODAMINE
A2102-RED	DIRECT LABEL TEXAS RED

Arm Probe Yp

Yp DNA probe gives a bright specific signal which evenly covers the entire length of the p arm of chromosome Y, and shows no cross-hybridization to other chromosomes or to the q arm.

TEN ASSAYS IN HYBRIDIZATION BUFFER

A2401-GRN	DIRECT LABEL FLUORESCCEIN
A2401-ORG	DIRECT LABEL RHODAMINE
A2401-RED	DIRECT LABEL TEXAS RED

Arm Probe 22q

22q DNA probe gives a bright specific signal which evenly covers the entire length of the q arm of chromosome 22, and shows no cross-hybridization to other chromosomes or to the p arm.

TEN ASSAYS IN HYBRIDIZATION BUFFER

A2202-GRN	DIRECT LABEL FLUORESCCEIN
A2202-ORG	DIRECT LABEL RHODAMINE
A2202-RED	DIRECT LABEL TEXAS RED

Arm Probe Yq

Yq DNA probe gives a bright specific signal which evenly covers the entire length of the q arm of chromosome Y, and shows no cross-hybridization to other chromosomes or to the p arm.

TEN ASSAYS IN HYBRIDIZATION BUFFER

A2402-GRN	DIRECT LABEL FLUORESCCEIN
A2402-ORG	DIRECT LABEL RHODAMINE
A2402-RED	DIRECT LABEL TEXAS RED

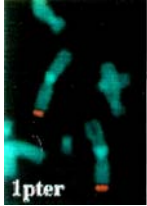
Arm Probe Xp

Xp DNA probe gives a bright specific signal which evenly covers the entire length of the p arm of chromosome X, and shows no cross-hybridization to other chromosomes or to the q arm.

TEN ASSAYS IN HYBRIDIZATION BUFFER

A2301-GRN	DIRECT LABEL FLUORESCCEIN
A2301-ORG	DIRECT LABEL RHODAMINE
A2301-RED	DIRECT LABEL TEXAS RED

Terminal Band Probes



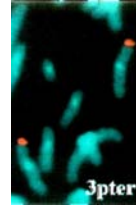
Terminal Band Probe 1pter

1pter DNA probe labels the terminal p36 band of chromosome 1. It shows no cross-hybridization with any other region of the human genome.

TEN ASSAYS IN HYBRIDIZATION BUFFER

TL101-GRN
TL101-ORG
TL101-RED

DIRECT LABEL FLUORESCCEIN
DIRECT LABEL RHODAMINE
DIRECT LABEL TEXAS RED



Terminal Band Probe 3pter

3pter DNA probe labels the terminal p26 band of chromosome 3. It shows no cross-hybridization with any other region of the human genome.

TEN ASSAYS IN HYBRIDIZATION BUFFER

TL301-GRN
TL301-ORG
TL301-RED

DIRECT LABEL FLUORESCCEIN
DIRECT LABEL RHODAMINE
DIRECT LABEL TEXAS RED



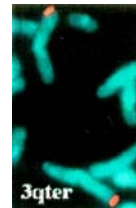
Terminal Band Probe 1qter

1qter DNA probe labels the terminal q44 band of chromosome 1. It shows no cross-hybridization with any other region of the human genome.

TEN ASSAYS IN HYBRIDIZATION BUFFER

TL102-GRN
TL102-ORG
TL102-RED

DIRECT LABEL FLUORESCCEIN
DIRECT LABEL RHODAMINE
DIRECT LABEL TEXAS RED



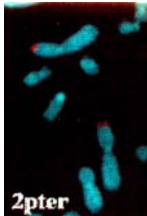
Terminal Band Probe 3qter

3qter DNA probe labels the terminal q29 band of chromosome 3. It shows no cross-hybridization with any other region of the human genome.

TEN ASSAYS IN HYBRIDIZATION BUFFER

TL302-GRN
TL302-ORG
TL302-RED

DIRECT LABEL FLUORESCCEIN
DIRECT LABEL RHODAMINE
DIRECT LABEL TEXAS RED



Terminal Band Probe 2pter

2pter DNA probe labels the terminal p25 band of chromosome 2. It shows no cross-hybridization with any other region of the human genome.

TEN ASSAYS IN HYBRIDIZATION BUFFER

TL201-GRN
TL201-ORG
TL201-RED

DIRECT LABEL FLUORESCCEIN
DIRECT LABEL RHODAMINE
DIRECT LABEL TEXAS RED



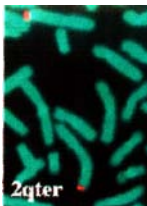
Terminal Band Probe 4pter

4pter DNA probe labels the terminal p16 band of chromosome 4. It shows no cross-hybridization with any other region of the human genome.

TEN ASSAYS IN HYBRIDIZATION BUFFER

TL401-GRN
TL401-ORG
TL401-RED

DIRECT LABEL FLUORESCCEIN
DIRECT LABEL RHODAMINE
DIRECT LABEL TEXAS RED



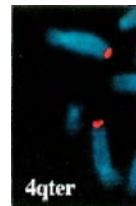
Terminal Band Probe 2qter

2qter DNA probe labels the terminal q37 band of chromosome 2. It shows no cross-hybridization with any other region of the human genome.

TEN ASSAYS IN HYBRIDIZATION BUFFER

TL202-GRN
TL202-ORG
TL202-RED

DIRECT LABEL FLUORESCCEIN
DIRECT LABEL RHODAMINE
DIRECT LABEL TEXAS RED



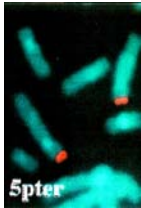
Terminal Band Probe 4qter

4qter DNA probe labels the terminal q35 band of chromosome 4. It shows no cross-hybridization with any other region of the human genome.

TEN ASSAYS IN HYBRIDIZATION BUFFER

TL402-GRN
TL402-ORG
TL402-RED

DIRECT LABEL FLUORESCCEIN
DIRECT LABEL RHODAMINE
DIRECT LABEL TEXAS RED



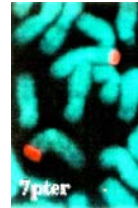
Terminal Band Probe 5pter

5pter DNA probe labels the terminal p15.3 band of chromosome 5. It shows no cross-hybridization with any other region of the human genome.

TEN ASSAYS IN HYBRIDIZATION BUFFER

TL501-GRN
TL501-ORG
TL501-RED

DIRECT LABEL FLUORESCCEIN
DIRECT LABEL RHODAMINE
DIRECT LABEL TEXAS RED



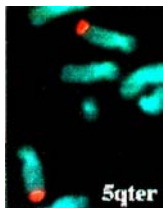
Terminal Band Probe 7pter

7pter DNA probe labels the terminal p22 band of chromosome 7. It shows no cross-hybridization with any other region of the human genome.

TEN ASSAYS IN HYBRIDIZATION BUFFER

TL701-GRN
TL701-ORG
TL701-RED

DIRECT LABEL FLUORESCCEIN
DIRECT LABEL RHODAMINE
DIRECT LABEL TEXAS RED



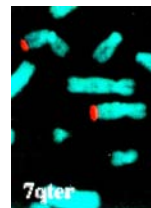
Terminal Band Probe 5qter

5qter DNA probe labels the terminal q35 band of chromosome 5. It shows no cross-hybridization with any other region of the human genome.

TEN ASSAYS IN HYBRIDIZATION BUFFER

TL502-GRN
TL502-ORG
TL502-RED

DIRECT LABEL FLUORESCCEIN
DIRECT LABEL RHODAMINE
DIRECT LABEL TEXAS RED



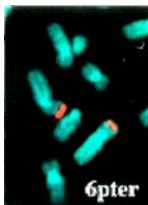
Terminal Band Probe 7qter

7qter DNA probe labels the terminal q36 band of chromosome 7. It shows no cross-hybridization with any other region of the human genome.

TEN ASSAYS IN HYBRIDIZATION BUFFER

TL702-GRN
TL702-ORG
TL702-RED

DIRECT LABEL FLUORESCCEIN
DIRECT LABEL RHODAMINE
DIRECT LABEL TEXAS RED



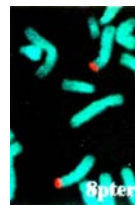
Terminal Band Probe 6pter

6pter DNA probe labels the terminal p25 band of chromosome 6. It shows no cross-hybridization with any other region of the human genome.

TEN ASSAYS IN HYBRIDIZATION BUFFER

TL601-GRN
TL601-ORG
TL601-RED

DIRECT LABEL FLUORESCCEIN
DIRECT LABEL RHODAMINE
DIRECT LABEL TEXAS RED



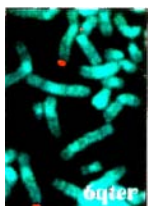
Terminal Band Probe 8pter

8pter DNA probe labels the terminal p23 band of chromosome 8. It shows no cross-hybridization with any other region of the human genome.

TEN ASSAYS IN HYBRIDIZATION BUFFER

TL801-GRN
TL801-ORG
TL801-RED

DIRECT LABEL FLUORESCCEIN
DIRECT LABEL RHODAMINE
DIRECT LABEL TEXAS RED



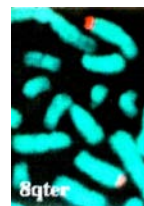
Terminal Band Probe 6qter

6qter DNA probe labels the terminal q27 band of chromosome 6. It shows no cross-hybridization with any other region of the human genome.

TEN ASSAYS IN HYBRIDIZATION BUFFER

TL602-GRN
TL602-ORG
TL602-RED

DIRECT LABEL FLUORESCCEIN
DIRECT LABEL RHODAMINE
DIRECT LABEL TEXAS RED



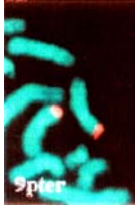
Terminal Band Probe 8qter

8qter DNA probe labels the terminal q24.3 band of chromosome 8. It shows no cross-hybridization with any other region of the human genome.

TEN ASSAYS IN HYBRIDIZATION BUFFER

TL802-GRN
TL802-ORG
TL802-RED

DIRECT LABEL FLUORESCCEIN
DIRECT LABEL RHODAMINE
DIRECT LABEL TEXAS RED



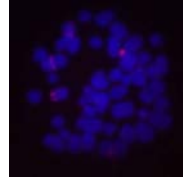
Terminal Band Probe 9pter

9pter DNA probe labels the terminal p24 band of chromosome 9. It shows no cross-hybridization with any other region of the human genome.

TEN ASSAYS IN HYBRIDIZATION BUFFER

TL901-GRN
TL901-ORG
TL901-RED

DIRECT LABEL FLUORESCHEIN
DIRECT LABEL RHODAMINE
DIRECT LABEL TEXAS RED



Terminal Band Probe 11pter

11pter DNA probe labels the terminal p15 band of chromosome 11. It shows no cross-hybridization with any other region of the human genome.

TEN ASSAYS IN HYBRIDIZATION BUFFER

TL1101-GRN
TL1101-ORG
TL1101-RED

DIRECT LABEL FLUORESCHEIN
DIRECT LABEL RHODAMINE
DIRECT LABEL TEXAS RED



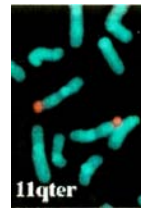
Terminal Band Probe 9qter

9qter DNA probe labels the terminal q34.2-34.3 bands of chromosome 9. It shows no cross-hybridization with any other region of the human genome.

TEN ASSAYS IN HYBRIDIZATION BUFFER

TL902-GRN
TL902-ORG
TL902-RED

DIRECT LABEL FLUORESCHEIN
DIRECT LABEL RHODAMINE
DIRECT LABEL TEXAS RED



Terminal Band Probe 11qter

11qter DNA probe labels the terminal q25 band of chromosome 11. It shows no cross-hybridization with any other region of the human genome.

TEN ASSAYS IN HYBRIDIZATION BUFFER

TL1102-GRN
TL1102-ORG
TL1102-RED

DIRECT LABEL FLUORESCHEIN
DIRECT LABEL RHODAMINE
DIRECT LABEL TEXAS RED



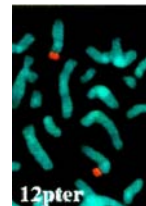
Terminal Band Probe 10pter

10pter DNA probe labels the terminal p15 band of chromosome 10. It shows no cross-hybridization with any other region of the human genome.

TEN ASSAYS IN HYBRIDIZATION BUFFER

TL1001-GRN
TL1001-ORG
TL1001-RED

DIRECT LABEL FLUORESCHEIN
DIRECT LABEL RHODAMINE
DIRECT LABEL TEXAS RED



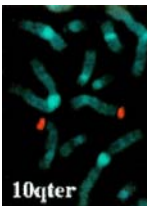
Terminal Band Probe 12pter

12pter DNA probe labels the terminal p13 band of chromosome 12. It shows no cross-hybridization with any other region of the human genome.

TEN ASSAYS IN HYBRIDIZATION BUFFER

TL1201-GRN
TL1201-ORG
TL1201-RED

DIRECT LABEL FLUORESCHEIN
DIRECT LABEL RHODAMINE
DIRECT LABEL TEXAS RED



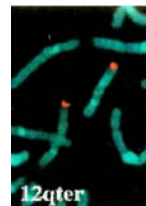
Terminal Band Probe 10qter

10qter DNA probe labels the terminal q26 band of chromosome 10. It shows no cross-hybridization with any other region of the human genome.

TEN ASSAYS IN HYBRIDIZATION BUFFER

TL1002-GRN
TL1002-ORG
TL1002-RED

DIRECT LABEL FLUORESCHEIN
DIRECT LABEL RHODAMINE
DIRECT LABEL TEXAS RED



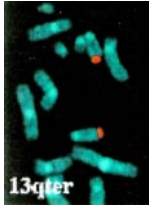
Terminal Band Probe 12qter

12qter DNA probe labels the terminal q24.3 band of chromosome 1. It shows no cross-hybridization with any other region of the human genome.

TEN ASSAYS IN HYBRIDIZATION BUFFER

TL1202-GRN
TL1202-ORG
TL1202-RED

DIRECT LABEL FLUORESCHEIN
DIRECT LABEL RHODAMINE
DIRECT LABEL TEXAS RED



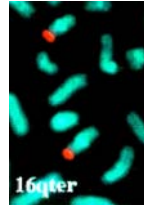
Terminal Band Probe 13qter

13qter DNA probe labels the terminal q34 band of chromosome 13. It shows no cross-hybridization with any other region of the human genome.

TEN ASSAYS IN HYBRIDIZATION BUFFER

TL1302-GRN
TL1302-ORG
TL1302-RED

DIRECT LABEL FLUORESCCEIN
DIRECT LABEL RHODAMINE
DIRECT LABEL TEXAS RED



Terminal Band Probe 16qter

16qter DNA probe labels the terminal q24 band of chromosome 16. It shows no cross-hybridization with any other region of the human genome.

TEN ASSAYS IN HYBRIDIZATION BUFFER

TL1602-GRN
TL1602-ORG
TL1602-RED

DIRECT LABEL FLUORESCCEIN
DIRECT LABEL RHODAMINE
DIRECT LABEL TEXAS RED



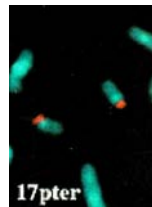
Terminal Band Probe 14qter

14qter DNA probe labels the terminal q32 band of chromosome 14. It shows no cross-hybridization with any other region of the human genome.

TEN ASSAYS IN HYBRIDIZATION BUFFER

TL1402-GRN
TL1402-ORG
TL1402-RED

DIRECT LABEL FLUORESCCEIN
DIRECT LABEL RHODAMINE
DIRECT LABEL TEXAS RED



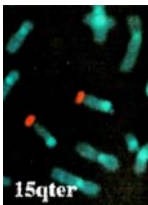
Terminal Band Probe 17pter

17pter DNA probe labels the terminal p13 band of chromosome 17. It shows no cross-hybridization with any other region of the human genome.

TEN ASSAYS IN HYBRIDIZATION BUFFER

TL1701-GRN
TL1701-ORG
TL1701-RED

DIRECT LABEL FLUORESCCEIN
DIRECT LABEL RHODAMINE
DIRECT LABEL TEXAS RED



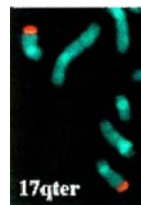
Terminal Band Probe 15qter

1qter DNA probe labels the terminal q44 band of chromosome 1. It shows no cross-hybridization with any other region of the human genome.

TEN ASSAYS IN HYBRIDIZATION BUFFER

TL1502-GRN
TL1502-ORG
TL1502-RED

DIRECT LABEL FLUORESCCEIN
DIRECT LABEL RHODAMINE
DIRECT LABEL TEXAS RED



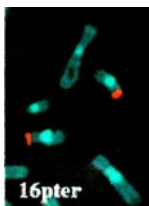
Terminal Band Probe 17qter

17qter DNA probe labels the terminal q25 band of chromosome 17. It shows no cross-hybridization with any other region of the human genome.

TEN ASSAYS IN HYBRIDIZATION BUFFER

TL1702-GRN
TL1702-ORG
TL1702-RED

DIRECT LABEL FLUORESCCEIN
DIRECT LABEL RHODAMINE
DIRECT LABEL TEXAS RED



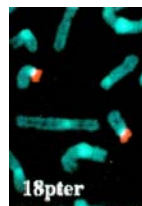
Terminal Band Probe 16pter

16pter DNA probe labels the terminal p13.3 band of chromosome 16. It shows no cross-hybridization with any other region of the human genome.

TEN ASSAYS IN HYBRIDIZATION BUFFER

TL1601-GRN
TL1601-ORG
TL1601-RED

DIRECT LABEL FLUORESCCEIN
DIRECT LABEL RHODAMINE
DIRECT LABEL TEXAS RED



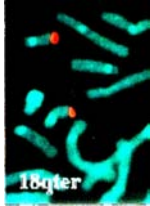
Terminal Band Probe 18pter

18pter DNA probe labels the terminal p11.2-11.3 bands of chromosome 18. It shows no cross-hybridization with any other region of the human genome.

TEN ASSAYS IN HYBRIDIZATION BUFFER

TL1801-GRN
TL1801-ORG
TL1801-RED

DIRECT LABEL FLUORESCCEIN
DIRECT LABEL RHODAMINE
DIRECT LABEL TEXAS RED



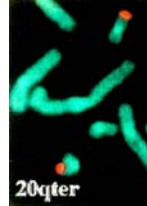
Terminal Band Probe 18qter

18qter DNA probe labels the terminal q23 band of chromosome 18. It shows no cross-hybridization with any other region of the human genome.

TEN ASSAYS IN HYBRIDIZATION BUFFER

TL1802-GRN
TL1802-ORG
TL1802-RED

DIRECT LABEL FLUORESCCEIN
DIRECT LABEL RHODAMINE
DIRECT LABEL TEXAS RED



Terminal Band Probe 20qter

20qter DNA probe labels the terminal q13.2-13.3 bands of chromosome 20. It shows no cross-hybridization with any other region of the human genome.

TEN ASSAYS IN HYBRIDIZATION BUFFER

TL2002-GRN
TL2002-ORG
TL2002-RED

DIRECT LABEL FLUORESCCEIN
DIRECT LABEL RHODAMINE
DIRECT LABEL TEXAS RED



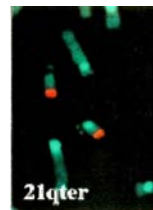
Terminal Band Probe 19pter

19pter DNA probe labels the terminal p13.3 band of chromosome 19. It shows no cross-hybridization with any other region of the human genome.

TEN ASSAYS IN HYBRIDIZATION BUFFER

TL1901-GRN
TL1901-ORG
TL1901-RED

DIRECT LABEL FLUORESCCEIN
DIRECT LABEL RHODAMINE
DIRECT LABEL TEXAS RED



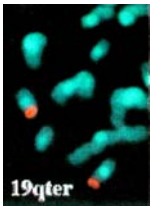
Terminal Band Probe 21qter

21qter DNA probe labels the terminal q22.2-22.3 band of chromosome 21. It shows no cross-hybridization with any other region of the human genome.

TEN ASSAYS IN HYBRIDIZATION BUFFER

TL2102-GRN
TL2102-ORG
TL2102-RED

DIRECT LABEL FLUORESCCEIN
DIRECT LABEL RHODAMINE
DIRECT LABEL TEXAS RED



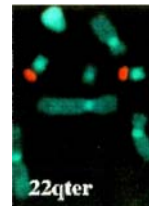
Terminal Band Probe 19qter

19qter DNA probe labels the terminal q13.3-13.4 bands of chromosome 19. It shows no cross-hybridization with any other region of the human genome.

TEN ASSAYS IN HYBRIDIZATION BUFFER

TL1902-GRN
TL1902-ORG
TL1902-RED

DIRECT LABEL FLUORESCCEIN
DIRECT LABEL RHODAMINE
DIRECT LABEL TEXAS RED



Terminal Band Probe 22qter

22qter DNA probe labels the terminal q13.2-13.3 band of chromosome 22. It shows no cross-hybridization with any other region of the human genome.

TEN ASSAYS IN HYBRIDIZATION BUFFER

TL2202-GRN
TL2202-ORG
TL2202-RED

DIRECT LABEL FLUORESCCEIN
DIRECT LABEL RHODAMINE
DIRECT LABEL TEXAS RED



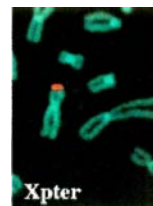
Terminal Band Probe 20pter

20pter DNA probe labels the terminal p13 band of chromosome 20. It shows no cross-hybridization with any other region of the human genome.

TEN ASSAYS IN HYBRIDIZATION BUFFER

TL2001-GRN
TL2001-ORG
TL2001-RED

DIRECT LABEL FLUORESCCEIN
DIRECT LABEL RHODAMINE
DIRECT LABEL TEXAS RED



Terminal Band Probe Xpter

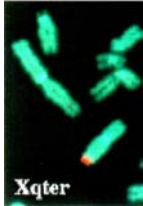
Xpter DNA probe labels the terminal p22.3 band of the X chromosome. It shows no cross-hybridization with any other region of the human genome.

TEN ASSAYS IN HYBRIDIZATION BUFFER

TL2301-GRN
TL2301-ORG
TL2301-RED

DIRECT LABEL FLUORESCCEIN
DIRECT LABEL RHODAMINE
DIRECT LABEL TEXAS RED

Specific Band Probes



Terminal Band Probe Xqter

Xqter DNA probe labels the terminal q28 band of the X chromosome. It shows no cross-hybridization with any other region of the human genome.

TEN ASSAYS IN HYBRIDIZATION BUFFER

TL2302-GRN	DIRECT LABEL FLUORESC EIN
TL2302-ORG	DIRECT LABEL RHODAMINE
TL2302-RED	DIRECT LABEL TEXAS RED

Specific Band Probe 1q21

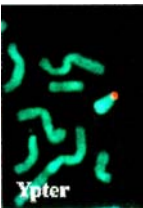
TEN ASSAYS IN HYBRIDIZATION BUFFER

SB101-GRN	DIRECT LABEL FLUORESC EIN
SB101-ORG	DIRECT LABEL RHODAMINE
SB101-RED	DIRECT LABEL TEXAS RED

Specific Band Probe 3q26

TEN ASSAYS IN HYBRIDIZATION BUFFER

SB301-GRN	DIRECT LABEL FLUORESC EIN
SB301-ORG	DIRECT LABEL RHODAMINE
SB301-RED	DIRECT LABEL TEXAS RED



Terminal Band Probe Ypter

Ypter DNA probe labels the terminal p11.2-11.3 bands of the Y chromosome. It shows no cross-hybridization with any other region of the human genome.

TEN ASSAYS IN HYBRIDIZATION BUFFER

TL2401-GRN	DIRECT LABEL FLUORESC EIN
TL2401-ORG	DIRECT LABEL RHODAMINE
TL2401-RED	DIRECT LABEL TEXAS RED

Specific Band Probe 6p21

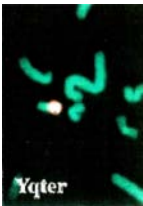
TEN ASSAYS IN HYBRIDIZATION BUFFER

SB601-GRN	DIRECT LABEL FLUORESC EIN
SB601-ORG	DIRECT LABEL RHODAMINE
SB601-RED	DIRECT LABEL TEXAS RED

Specific Band Probe 10q26

TEN ASSAYS IN HYBRIDIZATION BUFFER

SB1001-GRN	DIRECT LABEL FLUORESC EIN
SB1001-ORG	DIRECT LABEL RHODAMINE
SB1001-RED	DIRECT LABEL TEXAS RED



Terminal Band Probe Yqter

Yqter DNA probe labels the terminal q12 band of the Y chromosome. It shows no cross-hybridization with any other region of the human genome.

TEN ASSAYS IN HYBRIDIZATION BUFFER

TL2402-GRN	DIRECT LABEL FLUORESC EIN
TL2402-ORG	DIRECT LABEL RHODAMINE
TL2402-RED	DIRECT LABEL TEXAS RED

Specific Band Probe 12q21

TEN ASSAYS IN HYBRIDIZATION BUFFER

SB1201-GRN	DIRECT LABEL FLUORESC EIN
SB1201-ORG	DIRECT LABEL RHODAMINE
SB1201-RED	DIRECT LABEL TEXAS RED

Specific Band Probe 12q22-23

TEN ASSAYS IN HYBRIDIZATION BUFFER

SB1203-GRN	DIRECT LABEL FLUORESC EIN
SB1203-ORG	DIRECT LABEL RHODAMINE
SB1203-RED	DIRECT LABEL TEXAS RED

Specific Band Probe 21p21

TEN ASSAYS IN HYBRIDIZATION BUFFER

SB2101-GRN	DIRECT LABEL FLUORESC EIN
SB2101-ORG	DIRECT LABEL RHODAMINE
SB2101-RED	DIRECT LABEL TEXAS RED

Specific Band Probe 21q22

TEN ASSAYS IN HYBRIDIZATION BUFFER

SB2102-GRN	DIRECT LABEL FLUORESC EIN
SB2102-ORG	DIRECT LABEL RHODAMINE

Oncogene Probes

Specific Band Probe 22q11-12

TEN ASSAYS IN HYBRIDIZATION BUFFER

SB2203-GRN DIRECT LABEL FLUORESCHEIN
 SB2203-ORG DIRECT LABEL RHODAMINE
 SB2203-RED DIRECT LABEL TEXAS RED

Specific Band Probe 22q12

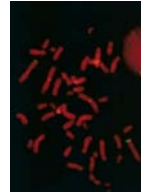
TEN ASSAYS IN HYBRIDIZATION BUFFER

SB2204-GRN DIRECT LABEL FLUORESCHEIN
 SB2204-ORG DIRECT LABEL RHODAMINE
 SB2204-RED DIRECT LABEL TEXAS RED

Specific Band Probe 22q13

TEN ASSAYS IN HYBRIDIZATION BUFFER

SB2205-GRN DIRECT LABEL FLUORESCHEIN
 SB2205-ORG DIRECT LABEL RHODAMINE
 SB2205-RED DIRECT LABEL TEXAS RED



Oncogene Probe 2p23 (N-MYC)

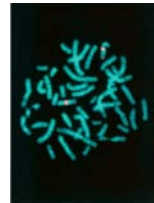
TEN ASSAYS IN HYBRIDIZATION BUFFER

OC201-GRN DIRECT LABEL FLUORESCHEIN
 OC201-ORG DIRECT LABEL RHODAMINE

Oncogene Probe 8q24.1-q24.2(C-MYC)

TEN ASSAYS IN HYBRIDIZATION BUFFER

OC801-GRN DIRECT LABEL FLUORESCHEIN
 OC801-ORG DIRECT LABEL RHODAMINE



Oncogene Probe 12q(MDM2, SAS, GLI)

TEN ASSAYS IN HYBRIDIZATION BUFFER

OC1201-GRN DIRECT LABEL FLUORESCHEIN
 OC1201-ORG DIRECT LABEL RHODAMINE

Oncogene Probe 17q(C-erb-B)

TEN ASSAYS IN HYBRIDIZATION BUFFER

OC1701-GRN DIRECT LABEL FLUORESCHEIN
 OC1701-ORG DIRECT LABEL RHODAMINE

PROTOCOL

Protocol

Specimen Preparation

1. Prepare metaphase spreads. Age at 37°C for 1-7 days.
2. Equilibrate denaturing solution in a 75±2°C water bath for approximately 30 minutes.
3. Immerse slides in denaturing solution for 2 minutes.
NOTE: Denaturing time should be increase 1-3 minutes if the age of slide is more than one week.
4. Dehydrate slides by incubating slides in 75%, 85% and 100% ethanol for 1 minute in each ethanol concentration.
5. Air dry slides.

NOTE: Slides should be dried thoroughly to get best FISH result.

Probe Denaturing

1. Denature 10µl FISH probes (3µl for 5-color PGD probes) in a 75±2°C for 5 minutes.
2. Keep the probes at 37°C for 2 minutes.

Hybridizing Probes to the Specimen

1. Apply the denatured probe to the slide.
2. Immediately apply a coverslip and seal with rubber cement. Keep the slide in a moist chamber at 37°C overnight for hybridization.

Slide Washing

1. Prepare two tanks of Wash Solution (WS).
2. Place one of the wash tanks containing WS in a 72°C water bath for at least 30 minutes prior to use.
3. Remove rubber cement and cover slips.
NOTE: To avoid drying, slides can be kept temporarily in WS at ambient temperature.
4. Wash the slides with WS at 72°C for 2 minutes.
5. Wash the slides with WS at ambient temperature for 2 minute.
6. Dehydrate slides by incubating slides in 75%, 85% and 100% ethanol for approximately 1 minute in each ethanol concentration.
7. Air dry the slides in darkness.

Visualization

1. Apply 20µl of DAPI counterstain and a coverslip to hybridization location.
NOTE: for 5-color PGD probes, antifade solution should be applied instead of DAPI counterstain.
2. Store in darkness for 20 minutes; afterwards, examine the slides under a fluorescence microscope with proper filter set.

ChromoTrax

Frederick Innovative Technology Center
401 Rosemont Avenue
Frederick, Maryland 21701

Phone: 301-698-9855
Fax: 301-644-3939
Email: Info@ChromoTrax.com

ChromoTrax